



My master polisher

«I don't simply use any scrubber to go over it! There must be the finest silk. And then a quite gentle massage until everything is shining. I'm talking about my daily tooth brushing!»

Adriano,
(Car Cosmetician)

paro[®] toothbrushes

paro[®] classic toothbrushes

The slender neck and the unique long handle with its diamante shape guarantee an appropriate positioning and usage of the internationally renowned **paro**[®] classic toothbrush series.

Perfectly rounded nylon bristles allow an intensive cleaning action while being gentle to the neighboring gingiva. The exclusive **paro**[®] *isola F*-tips (see page 10_11) can be attached at the end of each toothbrush handle. With only one instrument, the entire dentition can be cleaned and the gingiva massaged, even in hard to reach areas.

Clinical Reference Brush

The **paro**[®] classic toothbrushes are since a long time the benchmark against which all other toothbrushes have been tested at the University of Zurich, Switzerland. The consistent high quality of our brushes are what make them so esteemed.

paro[®] classic toothbrushes are available in different hardness's: medium (M), soft (S), extra sensitive / ultra-soft (exS).

paro[®] *exS39 / S39 / M39* - the extra sensitive toothbrush with ultra soft, soft or medium bristles (5 rows, 39 tufts)

paro[®] *S43 / M43* - compact brush head with soft or medium bristles (4 rows, 43 tufts)

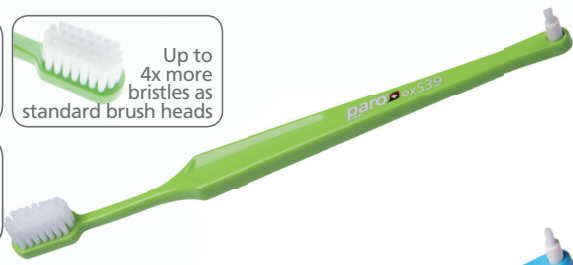
paro[®] *S27L / M27L* - small brush head with soft or medium bristles (3 rows, 27 tufts)

paro[®] *S27 / M27* - small brush head, short handle with soft or medium bristles (27 tufts)

paro[®] medic

Excellent on the **paro**[®] *medic* is its filament technology; conical and soft filaments with silky-fine, ultra flexible ends.

These especially soft and silky bristles feel pleasantly comfortable to the touch. They contribute to a thorough but gentle cleaning, especially at the gum line, where plaque tends to settle.



714 **paro**[®] exS39
715 **paro**[®] S39
716 **paro**[®] M39



708 **paro**[®] M43
709 **paro**[®] S43



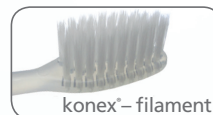
738 **paro**[®] M27L
739 **paro**[®] S27L



744 **paro**[®] M27
746 **paro**[®] S27



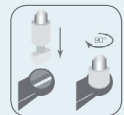
726 **paro**[®] medic



paro[®] classic toothbrushes are available in six different colors



Fitting-end for **paro**[®] *isola F*-inserts (see page 10|11).



in blister



in cellophane bag

Art.-No. **paro**[®] toothbrushes - assorted in different colors

714	paro [®] exS39 – ultra-soft/ extra sensitive, 5 rows, with paro [®] interspace brush F
715	paro [®] S39 – soft, 5 rows, with paro [®] interspace brush F
716	paro [®] M39 – medium, 5 rows, with paro [®] interspace brush F
708	paro [®] M43 – medium, 4 rows, with paro [®] interspace brush F
709	paro [®] S43 – soft, 4 rows, with paro [®] interspace brush F
738	paro [®] M27L – medium, 3 rows, with paro [®] interspace brush F
739	paro [®] S27L – soft, 3 rows, with paro [®] interspace brush F
744	paro [®] M27 – medium, with paro [®] interspace brush F
746	paro [®] S27 – soft, with paro [®] interspace brush F
726	paro [®] medic – soft, konex